

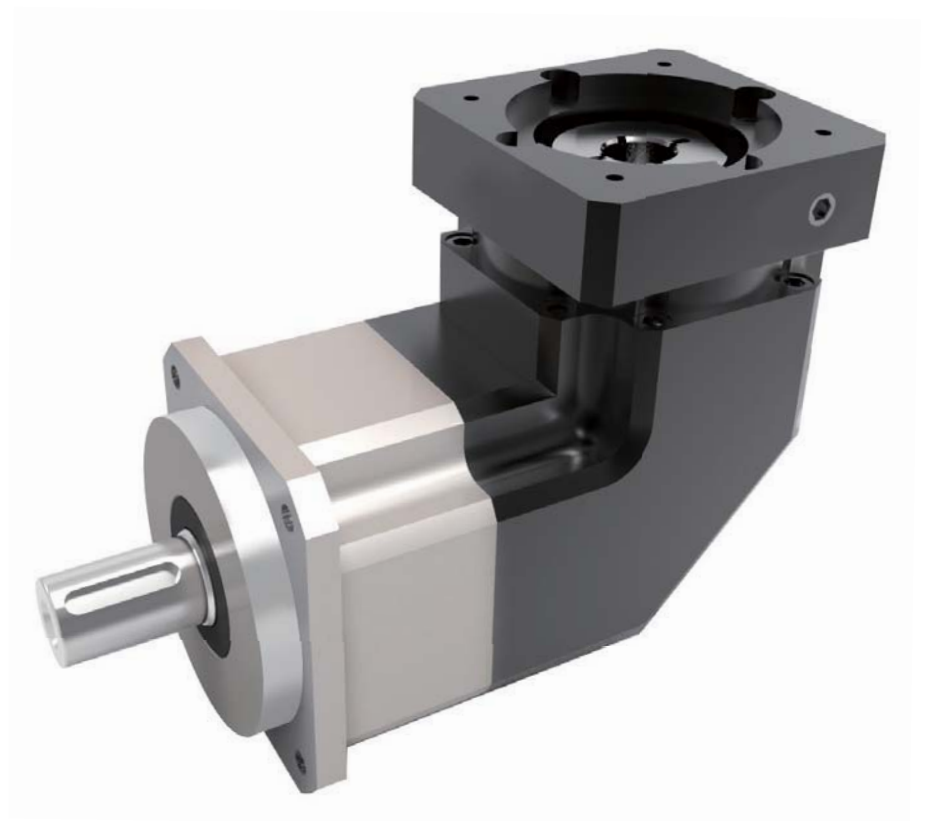


For servo motor  
**CBT REDUCER**

伺服馬達專用

**CBT減速機**

**BH-R Series**





### 高精度

背隙低於3分、定位精確

### High precision

Standard backlash is 3 arc-min, ideal for precision control.

### 高剛性、高扭矩

使用整體式滾針軸承，大大提高了剛性和扭矩。

### High rigidity & torque

High rigidity & high torque was achieved by uncaged needle roller bearings.

### 省空間

直交型減速機使用螺旋式傘齒輪，馬達的安裝可實現90度彎曲，節省了安裝空間。

### Space - saving

Right angle reducer using spiral bevel gear. Customer can locate the motor at 90 degree away from the reducer if required to save space.

### 連接器、軸套方式

可以安裝到世界上任何一臺馬達上。

### Adapter-bushing connection

Can be attached to any motor all over the world.

### 無潤滑脂泄漏

使用高粘度、不易分離的潤滑脂，有效防止潤滑脂泄漏。

### No grease leakage

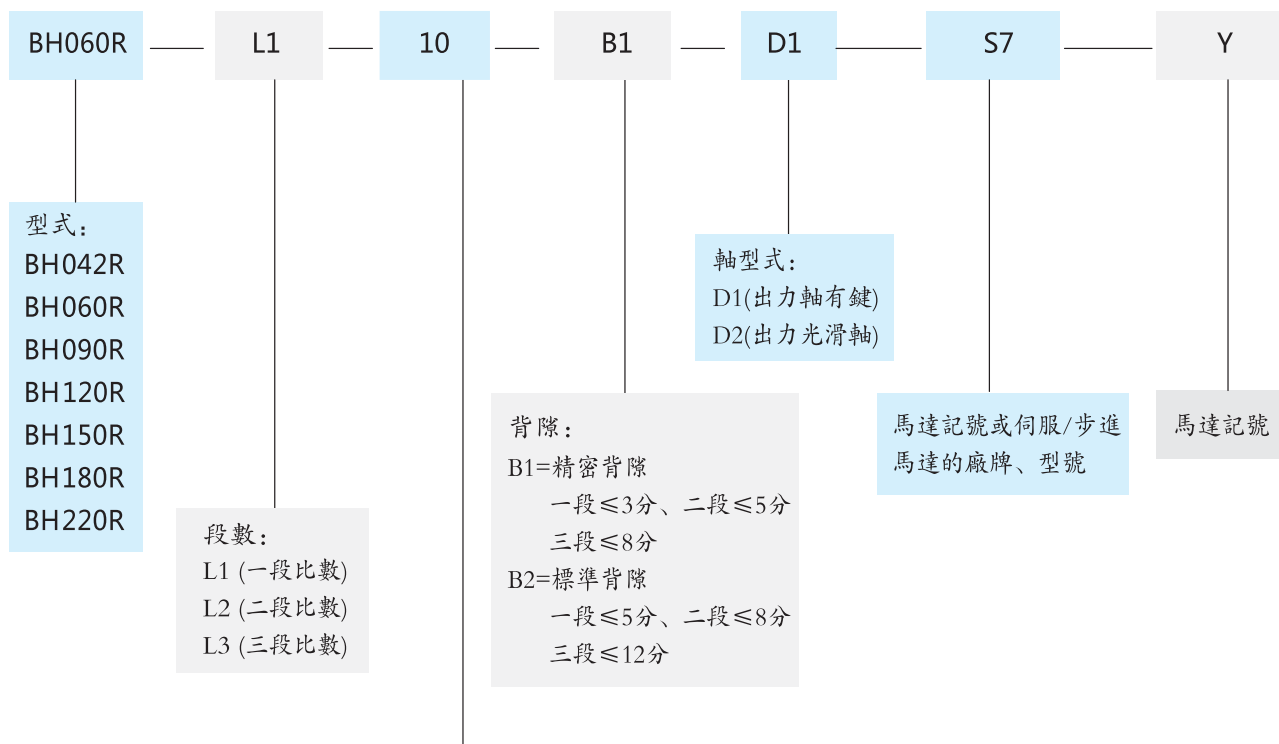
Perfect solution by high viscosity anti-separation grease.

### 維護方便

在產品壽命期內無需更換潤滑脂，安裝更便捷。

### Maintenance-free

No need to replace the grease for the life time. Can be attached in any position.



規格 Specifications	段數 Stage No	一段減速比數 Single Stage Ratio(L1)	二段減速比數 Double Stage Ratio(L2)	三段減速比數 Triple Stage Ratio(L3)
BH042R		3, 4, 5, 7, 10	12, 15, 16, 20, 25, 30, 35, 40, 50, 70, 100	
BH060R		3, 4, 5, 7, 10	12, 15, 16, 20, 25, 30, 35, 40, 50, 70, 100	120, 150, 160, 200, 250, 300, 350, 400, 500, 700, 1000
BH090R		3, 4, 5, 7, 10	12, 15, 16, 20, 25, 30, 35, 40, 50, 70, 100	120, 150, 160, 200, 250, 300, 350, 400, 500, 700, 1000
BH120R		3, 4, 5, 7, 10	12, 15, 16, 20, 25, 30, 35, 40, 50, 70, 100	120, 150, 160, 200, 250, 300, 350, 400, 500, 700, 1000
BH150R		3, 4, 5, 7, 10	12, 15, 16, 20, 25, 30, 35, 40, 50, 70, 100	120, 150, 160, 200, 250, 300, 350, 400, 500, 700, 1000
BH180R		3, 4, 5, 7, 10	12, 15, 16, 20, 25, 30, 35, 40, 50, 70, 100	120, 150, 160, 200, 250, 300, 350, 400, 500, 700, 1000
BH220R		3, 4, 5, 7, 10	12, 15, 16, 20, 25, 30, 35, 40, 50, 70, 100	120, 150, 160, 200, 250, 300, 350, 400, 500, 700, 1000



### BH 042R

速 比	Ratio		3	4	5	7	10	12	15	16	20	25	30	35	40	50	70	100
額定輸出扭矩 $T_{2N}$	Nominal Output Torque $T_{2N}$	Nm	20	19	22	19	14	20	20	19	19	22	14	19	14	14	14	14
急停扭矩 $T_{2NOT}$	Emergency Stop Torque $T_{2NOT}$	Nm	3倍額定輸出扭矩															
額定輸入轉速 $n_{1N}$	Nominal input Speed $n_{1N}$	rpm	3000															
最高輸入轉速 $n_{1B}$	Maximum input Speed $n_{1B}$	rpm	6000															
扭轉剛性	Torsional Rigidity	Nm/arcmin	3															
容許徑向負荷 $F_{2rB}$	Permitted radial load $F_{2rB}$	N	780															
容許軸向負荷 $F_{2tB}$	Permitted axial load $F_{2tB}$	N	350															
使用壽命	Service Life	hr	20000 (連續運轉壽命減半)															
噪音值	Noise	dB	≤65 (輸入轉速=3000rpm、空載、距離1m)															
使用溫度	Operating Temp	°C	-10 ~ +90°C															
防護等級	Degree of Gearbox Protection		IP65															
潤滑	Lubrication		合成潤滑油脂 (終身潤滑)															
轉動慣量 $J_1$	Mass Moments of inertia $J_1$	kg·cm <sup>2</sup>	0.03	0.03	0.03	0.03	0.03	0.03	0.03	0.03	0.03	0.03	0.03	0.03	0.03	0.03	0.03	0.03
重量	Weight	Kg	0.55								0.85							
精密背隙 B1	Precision Backlash B1	arcmin	≤5								≤8							
標準背隙 B2	Standard Backlash B2	arcmin	≤8								≤12							
效率 $\eta$	Efficiency $\eta$	%	≥95%								≥92%							

### BH 060R

速 比	Ratio		3	4	5	7	10	12	15	16	20	25	30	35	40	50	70	100
額定輸出扭矩 $T_{2N}$	Nominal Output Torque $T_{2N}$	Nm	45	50	60	50	40	45	45	50	50	60	45	50	40	40	40	40
急停扭矩 $T_{2NOT}$	Emergency Stop Torque $T_{2NOT}$	Nm	3倍額定輸出扭矩															
額定輸入轉速 $n_{1N}$	Nominal input Speed $n_{1N}$	rpm	3000															
最高輸入轉速 $n_{1B}$	Maximum input Speed $n_{1B}$	rpm	6000															
扭轉剛性	Torsional Rigidity	Nm/arcmin	7															
容許徑向負荷 $F_{2rB}$	Permitted radial load $F_{2rB}$	N	1530															
容許軸向負荷 $F_{2tB}$	Permitted axial load $F_{2tB}$	N	630															
使用壽命	Service Life	hr	20000 (連續運轉壽命減半)															
噪音值	Noise	dB	≤65 (輸入轉速=3000rpm、空載、距離1m)															
使用溫度	Operating Temp	°C	-10 ~ +90°C															
防護等級	Degree of Gearbox Protection		IP65															
潤滑	Lubrication		合成潤滑油脂 (終身潤滑)															
轉動慣量 $J_1$	Mass Moments of inertia $J_1$	kg·cm <sup>2</sup>	0.18	0.14	0.13	0.13	0.13	0.14	0.13	0.14	0.13	0.13	0.13	0.13	0.13	0.13	0.03	0.03
重量	Weight	Kg	1.32								1.65							
精密背隙 B1	Precision Backlash B1	arcmin	≤3								≤5							
標準背隙 B2	Standard Backlash B2	arcmin	≤5								≤8							
效率 $\eta$	Efficiency $\eta$	%	≥95%								≥92%							



BH 090R																		
速 比	Ratio		3	4	5	7	10	12	15	16	20	25	30	35	40	50	70	100
額定輸出扭矩 $T_{2N}$	Nominal Output Torque $T_{2N}$	Nm	130	140	160	140	100	130	130	140	140	160	100	160	100	100	100	100
急停扭矩 $T_{2NOT}$	Emergency Stop Torque $T_{2NOT}$	Nm	3倍額定輸出扭矩															
額定輸入轉速 $n_{1N}$	Nominal input Speed $n_{1N}$	rpm	3000															
最高輸入轉速 $n_{1B}$	Maximum input Speed $n_{1B}$	rpm	6000															
扭轉剛性	Torsional Rigidity	Nm/arcmin	14															
容許徑向負荷 $F_{2rB}$	Permitted radial load $F_{2rB}$	N	3250															
容許軸向負荷 $F_{2tB}$	Permitted axial load $F_{2tB}$	N	1300															
使用壽命	Service Life	hr	20000 (連續運轉壽命減半)															
噪音值	Noise	dB	≤65 (輸入轉速=3000rpm、空載、距離1m)															
使用溫度	Operating Temp	°C	-10 ~ +90 °C															
防護等級	Degree of Gearbox Protection		IP65															
潤滑	Lubrication		合成潤滑油脂 (終身潤滑)															
轉動慣量 $J_1$	Mass Moments of inertia $J_1$	kg·cm <sup>2</sup>	0.61	0.48	0.47	0.45	0.44	0.61	0.47	0.48	0.47	0.47	0.47	0.47	0.47	0.44	0.13	0.13
重量	Weight	Kg	4								5.2							
精密背隙 B1	Precision Backlash B1	arcmin	≤3								≤5							
標準背隙 B2	Standard Backlash B2	arcmin	≤5								≤8							
效率 $\eta$	Efficiency $\eta$	%	≥95%								≥92%							

BH 120R																		
速 比	Ratio		3	4	5	7	10	12	15	16	20	25	30	35	40	50	70	100
額定輸出扭矩 $T_{2N}$	Nominal Output Torque $T_{2N}$	Nm	208	290	330	300	230	208	208	290	290	330	230	300	230	230	230	230
急停扭矩 $T_{2NOT}$	Emergency Stop Torque $T_{2NOT}$	Nm	3倍額定輸出扭矩															
額定輸入轉速 $n_{1N}$	Nominal input Speed $n_{1N}$	rpm	3000															
最高輸入轉速 $n_{1B}$	Maximum input Speed $n_{1B}$	rpm	6000															
扭轉剛性	Torsional Rigidity	Nm/arcmin	25															
容許徑向負荷 $F_{2rB}$	Permitted radial load $F_{2rB}$	N	6700															
容許軸向負荷 $F_{2tB}$	Permitted axial load $F_{2tB}$	N	3000															
使用壽命	Service Life	hr	20000 (連續運轉壽命減半)															
噪音值	Noise	dB	≤65 (輸入轉速=3000rpm、空載、距離1m)															
使用溫度	Operating Temp	°C	-10 ~ +90 °C															
防護等級	Degree of Gearbox Protection		IP65															
潤滑	Lubrication		合成潤滑油脂 (終身潤滑)															
轉動慣量 $J_1$	Mass Moments of inertia $J_1$	kg·cm <sup>2</sup>	3.25	2.74	2.71	2.65	2.57	3.25	2.57	2.74	2.57	2.57	2.57	2.57	2.57	2.57	0.44	0.44
重量	Weight	Kg	8.6								11.2							
精密背隙 B1	Precision Backlash B1	arcmin	≤3								≤5							
標準背隙 B2	Standard Backlash B2	arcmin	≤5								≤8							
效率 $\eta$	Efficiency $\eta$	%	≥95%								≥92%							



BH 150R																			
速 比	Ratio		3	4	5	7	10	12	15	16	20	25	30	35	40	50	70	100	
額定輸出扭矩 $T_{2N}$	Nominal Output Torque $T_{2N}$	Nm	342	542	650	550	450	342	342	542	542	650	450	550	450	450	450	450	450
急停扭矩 $T_{2NOT}$	Emergency Stop Torque $T_{2NOT}$	Nm	3倍額定輸出扭矩																
額定輸入轉速 $n_{1N}$	Nominal input Speed $n_{1N}$	rpm	3000																
最高輸入轉速 $n_{1B}$	Maximum input Speed $n_{1B}$	rpm	6000																
扭轉剛性	Torsional Rigidity	Nm/arcmin	50																
容許徑向負荷 $F_{2rB}$	Permitted radial load $F_{2rB}$	N	9400																
容許軸向負荷 $F_{2tB}$	Permitted axial load $F_{2tB}$	N	4700																
使用壽命	Service Life	hr	20000 (連續運轉壽命減半)																
噪音值	Noise	dB	≤65 (輸入轉速=3000rpm、空載、距離1m)																
使用溫度	Operating Temp	°C	-10 ~ +90°C																
防護等級	Degree of Gearbox Protection		IP65																
潤滑	Lubrication		合成潤滑油脂 (終身潤滑)																
轉動慣量 $J_1$	Mass Moments of inertia $J_1$	kg·cm <sup>2</sup>	9.21	7.54	7.42	7.14	7.03	9.21	7.03	7.54	7.03	7.03	7.03	7.03	2.57	2.57	2.57	2.57	2.57
重量	Weight	Kg	15.2							19.6									
精密背隙 B1	Precision Backlash B1	arcmin	≤3							≤5									
標準背隙 B2	Standard Backlash B2	arcmin	≤5							≤8									
效率 $\eta$	Efficiency $\eta$	%	≥95%							≥92%									

BH 180R																			
速 比	Ratio		3	4	5	7	10	12	15	16	20	25	30	35	40	50	70	100	
額定輸出扭矩 $T_{2N}$	Nominal Output Torque $T_{2N}$	Nm	590	1050	1180	1000	900	590	590	1050	1050	1180	900	1000	900	900	900	900	900
急停扭矩 $T_{2NOT}$	Emergency Stop Torque $T_{2NOT}$	Nm	3倍額定輸出扭矩																
額定輸入轉速 $n_{1N}$	Nominal input Speed $n_{1N}$	rpm	2500																
最高輸入轉速 $n_{1B}$	Maximum input Speed $n_{1B}$	rpm	5000																
扭轉剛性	Torsional Rigidity	Nm/arcmin	145																
容許徑向負荷 $F_{2rB}$	Permitted radial load $F_{2rB}$	N	14500																
容許軸向負荷 $F_{2tB}$	Permitted axial load $F_{2tB}$	N	7000																
使用壽命	Service Life	hr	20000 (連續運轉壽命減半)																
噪音值	Noise	dB	≤65 (輸入轉速=1500rpm、空載、距離1m)																
使用溫度	Operating Temp	°C	-10 ~ +90°C																
防護等級	Degree of Gearbox Protection		IP65																
潤滑	Lubrication		合成潤滑油脂 (終身潤滑)																
轉動慣量 $J_1$	Mass Moments of inertia $J_1$	kg·cm <sup>2</sup>	28.98	23.67	23.29	22.48	22.51	28.98	22.51	23.7	22.51	22.51	22.51	22.51	7.03	7.03	7.03	7.03	7.03
重量	Weight	Kg	29.8							34.6									
精密背隙 B1	Precision Backlash B1	arcmin	≤3							≤5									
標準背隙 B2	Standard Backlash B2	arcmin	≤5							≤8									
效率 $\eta$	Efficiency $\eta$	%	≥95%							≥92%									

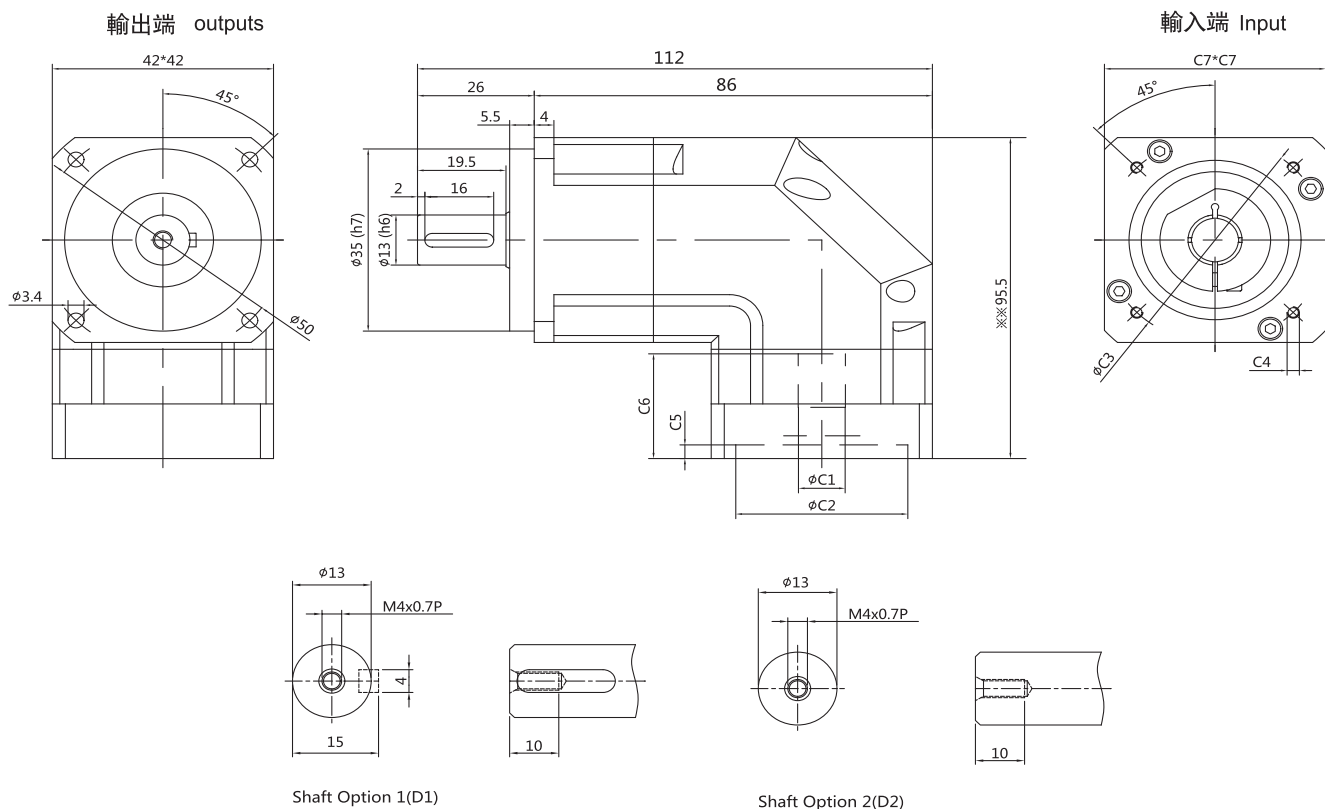


BH 220R																				
速 比	Ratio		3	4	5	7	10	12	15	16	20	25	30	35	40	50	70	100		
額定輸出扭矩 T <sub>2N</sub>	Nominal Output Torque T <sub>2N</sub>	Nm	1140	1800	2000	1700	1500	1140	1140	1800	1800	2000	1140	1700	1500	1500	1500	1500		
急停扭矩 T <sub>2NOT</sub>	Emergency Stop Torque T <sub>2NOT</sub>	Nm	3倍額定輸出扭矩																	
額定輸入轉速 n <sub>1N</sub>	Nominal input Speed n <sub>1N</sub>	rpm	2000																	
最高輸入轉速 n <sub>1B</sub>	Maximum input Speed n <sub>1B</sub>	rpm	4000																	
扭轉剛性	Torsional Rigidity	Nm/arcmin	145																	
容許徑向負荷 F <sub>2rB</sub>	Permitted radial load F <sub>2rB</sub>	N	14500																	
容許軸向負荷 F <sub>2tB</sub>	Permitted axdial load F <sub>2tB</sub>	N	7000																	
使用壽命	Service Life	hr	20000（連續運轉壽命減半）																	
噪音值	Noise	dB	≤70（輸入轉速=1500rpm、空載、距離1m）																	
使用溫度	Operating Temp	℃	-10 ~ +90℃																	
防護等級	Degree of Gearbox Protection		IP65																	
潤滑	Lubrication		合成潤滑油脂（終身潤滑）																	
轉動慣量 J <sub>1</sub>	Mass Moments of inertia J <sub>1</sub>	kg·cm <sup>2</sup>	69.61	54.37	53.27	50.97	50.56	50.56	50.56	50.56	50.56	50.56	22.51	22.51	22.51	22.51	22.51	22.51		
重量	Weight	Kg	49.5						61											
精密背隙 B1	Precision Backlash B1	arcmin	≤3						≤5											
標準背隙 B2	Standard Backlash B2	arcmin	≤5						≤8											
效率 η	Efficiency η	%	≥95%						≥92%											





### ● BH042R-L1 (一段)



單位: mm

馬達記號 Motor Mark 輸入端尺寸 Input Size	S1	S2	S3	S4
※C1 (H)	8	8	5	5
※C2 (H)	30	30	22	22
※C3	45	46	43.8	32.5
※C4	M4	M4	M3	M3
※C5	3	3	3	3
※C6	26	26	26	26
※C7	42	42	42	42

注:

1. 帶※尺寸可依據馬達實際尺寸定制, 如有需要請聯系我司。
2. 帶※※為最大尺寸, 隨安裝馬達的不同而尺寸會有所變化。

Note:

1. “※” The size can be customized according to the actual size of the motor. Please contact our company if necessary
2. “※※” For maximum size, the mounting motors vary in size.



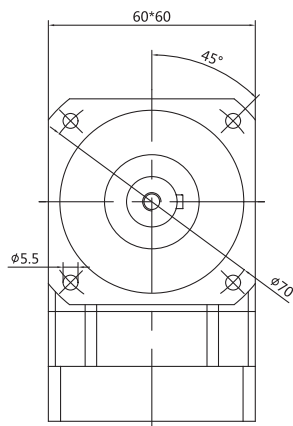




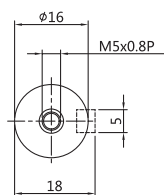
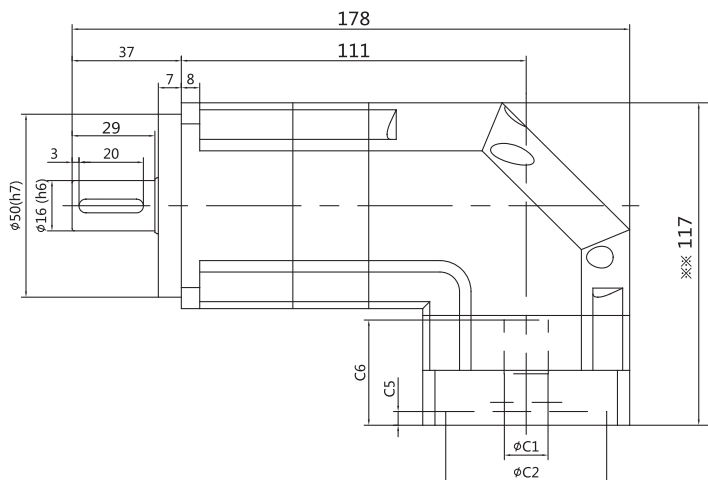
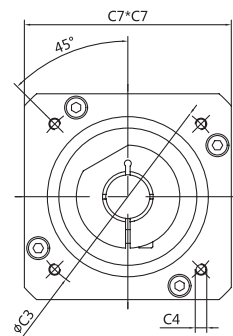


### ● BH060R-L2 (二段)

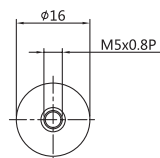
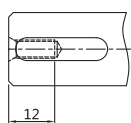
輸出端 outputs



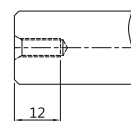
輸入端 Input



Shaft Option 1 (D1)



Shaft Option 2 (D2)



單位: mm

馬達記號 Motor Mark 輸入端尺寸 Input Size	S1	S2	S3	S4	S5	S6	S7	S8
※C1(H)	8	8	11	14	14	14	14	6.35
※C2(H)	30	30	50	50	50	70	70	38.1
※C3	45	46	70	70	70	90	90	66.7
※C4	M3	M4	M4	M4	M5	M5	M6	M4
※C5	3.5	3.5	6	6	6	6	6	3.5
※C6	32	32	32	32	32	40	40	32
※C7	60	60	60	60	60	80	80	60

注:

1. 帶※尺寸可依據馬達實際尺寸定制, 如有需要請聯系我司。
2. 帶※※為最大尺寸, 隨安裝馬達的不同而尺寸會有所變化。

Note:

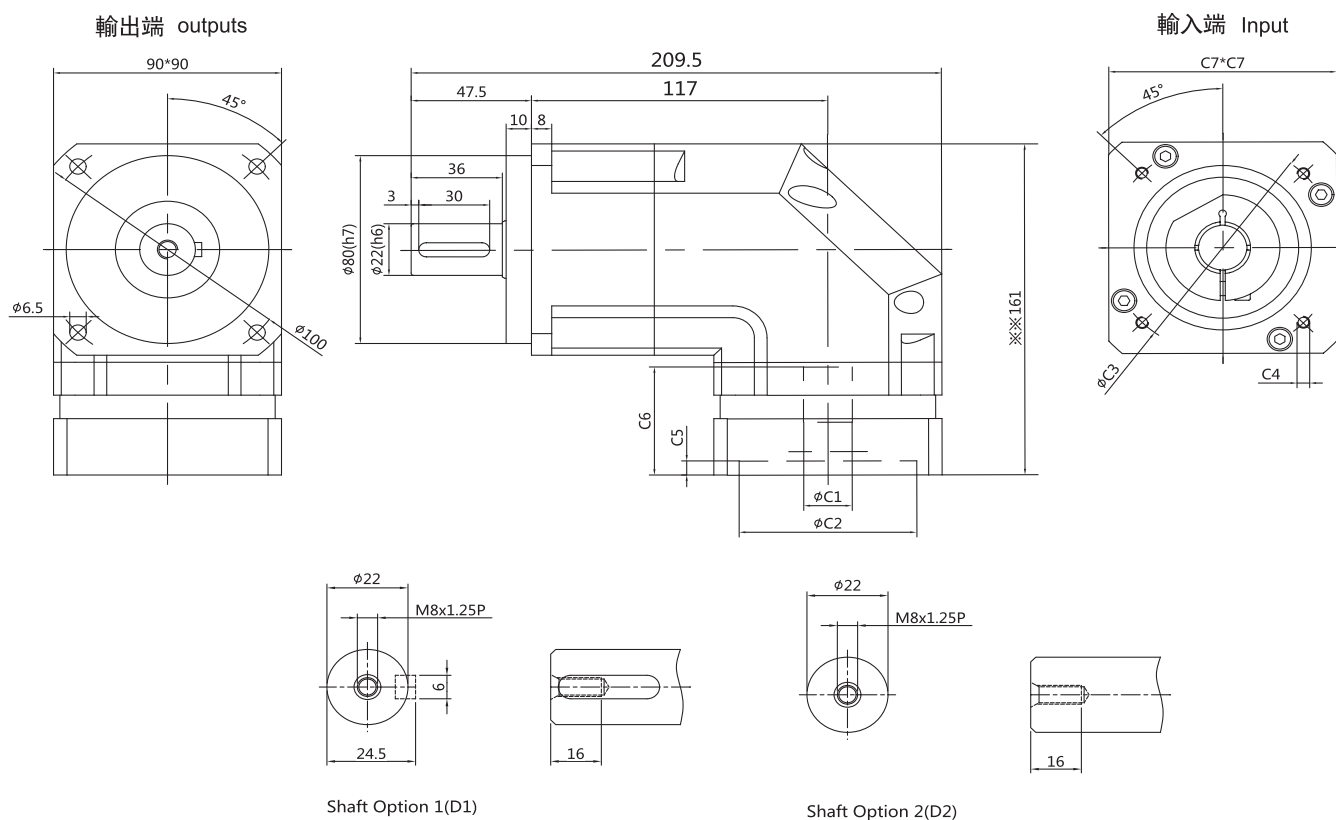
1. “※” The size can be customized according to the actual size of the motor. Please contact our company if necessary
2. “※※” For maximum size, the mounting motors vary in size.



### ● BH090R-L1 (一段)

CBT 減速機 BH-R系列

CBT Reducer BH-R series



單位: mm

馬達記號 Motor Mark 輸入端尺寸 Input Size	S1	S2	S3	S4	S5	S6	S7	S8	S9	S10
※C1(H)	11	14	14	14	16	16	19	19	22	24
※C2(H)	50	50	50	70	70	80	70	110	110	110
※C3	70	70	70	90	90	100	90	145	145	145
※C4	M4	M4	M5	M6	M6	M6	M6	M8	M8	M8
※C5	3.5	3.5	3.5	6	6	6	6	10	10	10
※C6	32	32	32	45	45	45	45	60	60	60
※C7	60	60	60	90	90	90	90	130	130	130

注:

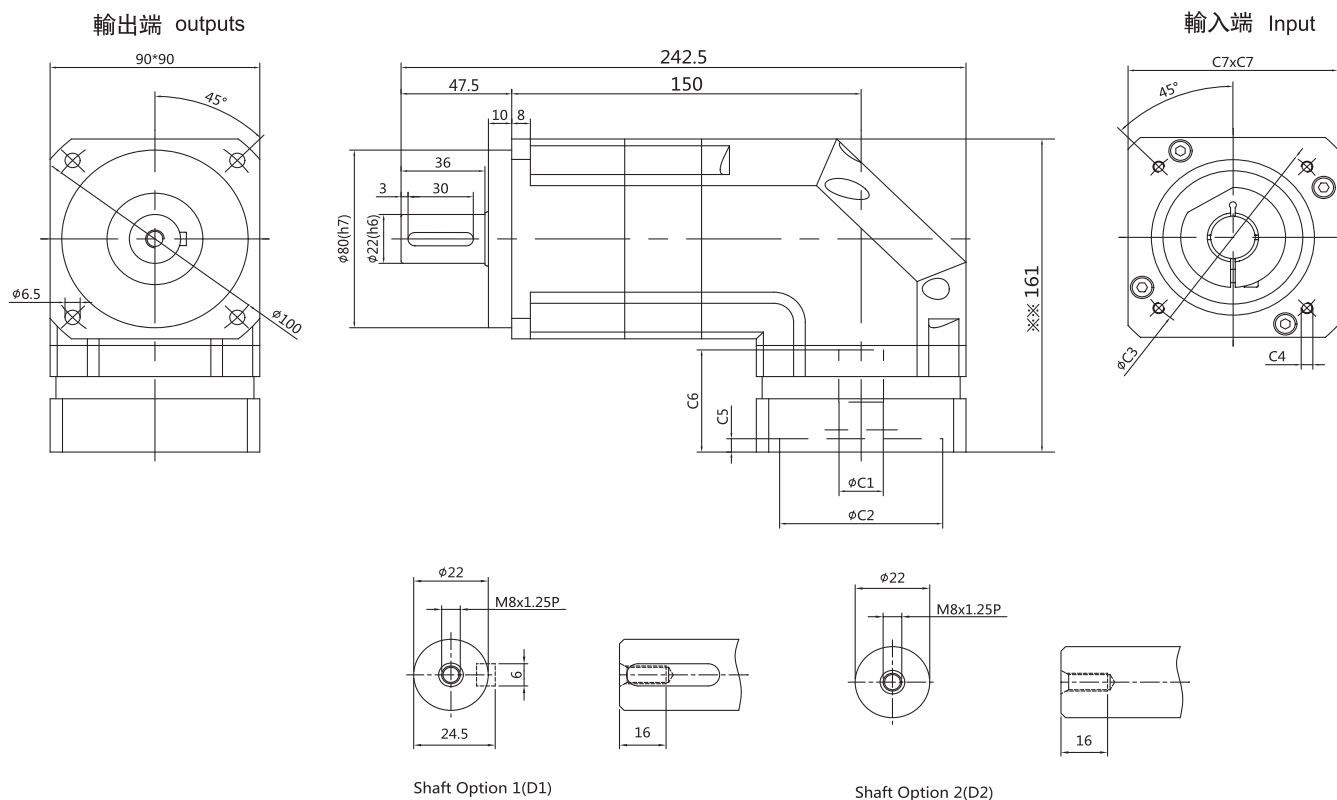
1. 帶※尺寸可依據馬達實際尺寸定制, 如有需要請聯系我司。
2. 帶※※為最大尺寸, 隨安裝馬達的不同而尺寸會有所變化。

Note:

1. “※” The size can be customized according to the actual size of the motor. Please contact our company if necessary
2. “※※” For maximum size, the mounting motors vary in size.



### ● BH090R-L2 (二段)



單位: mm

馬達記號 Motor Mark 輸入端尺寸 Input Size	S1	S2	S3	S4	S5	S6	S7	S8	S9	S10
※C1(H)	11	14	14	14	16	16	19	19	22	24
※C2(H)	50	50	50	70	70	80	70	110	110	110
※C3	70	70	70	90	90	100	90	145	145	145
※C4	M4	M4	M5	M6	M6	M6	M6	M8	M8	M8
※C5	3.5	3.5	3.5	6	6	6	6	10	10	10
※C6	32	32	32	45	45	45	45	60	60	60
※C7	60	60	60	90	90	90	90	130	130	130

注:

1. 帶※尺寸可依據馬達實際尺寸定制, 如有需要請聯系我司。
2. 帶※※為最大尺寸, 隨安裝馬達的不同而尺寸會有所變化。

Note:

1. “※” The size can be customized according to the actual size of the motor. Please contact our company if necessary
2. “※※” For maximum size, the mounting motors vary in size.

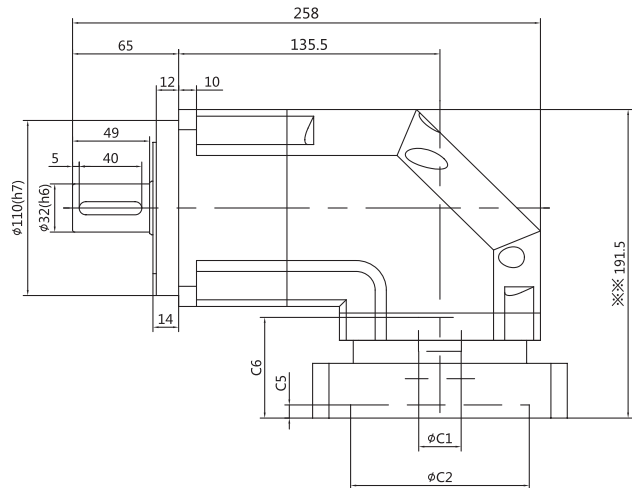
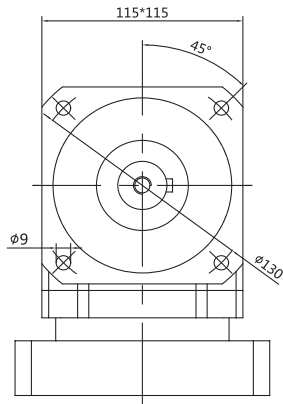


### BH120R-L1 (一段)

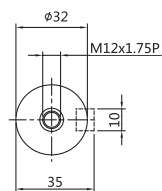
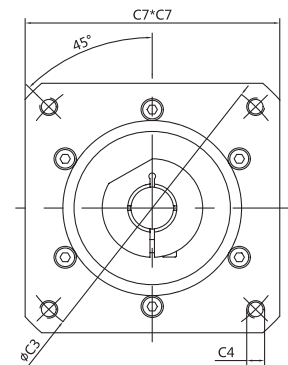
CBT 減速機 BH-R 系列

CBT Reducer BH-R series

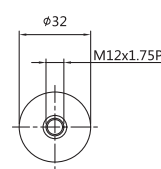
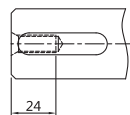
輸出端 outputs



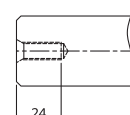
輸入端 Input



Shaft Option 1(D1)



Shaft Option 2(D2)



單位: mm

馬達記號 Motor Mark 輸入端尺寸 Input Size	S1	S2	S3	S4	S5	S6	S7	S8	S9	S10
※C1(H)	16	16	19	19	19	22	22	22	24	28
※C2(H)	70	80	70	95	110	95	110	110	110	110
※C3	90	100	90	115	145	115	130	145	145	145
※C4	M6	M6	M6	M8	M8	M8	M8	M8	M8	M8
※C5	6	6	6	8	8	8	8	8	8	8
※C6	52	52	52	62	62	62	62	62	62	62
※C7	90	90	90	130	130	130	130	130	130	130

注:

1. 帶※尺寸可依據馬達實際尺寸定制, 如有需要請聯系我司。
2. 帶※※為最大尺寸, 隨安裝馬達的不同而尺寸會有所變化。

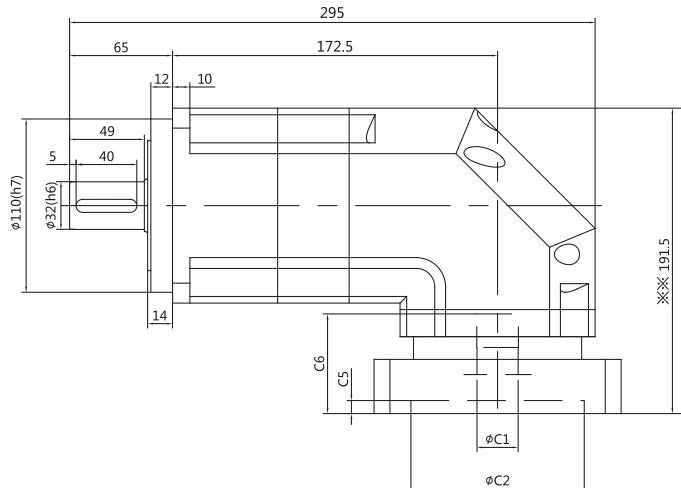
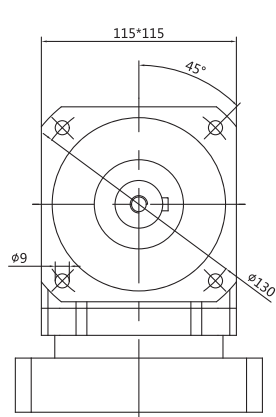
Note:

1. "※" The size can be customized according to the actual size of the motor. Please contact our company if necessary
2. "※※" For maximum size, the mounting motors vary in size.

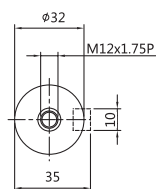
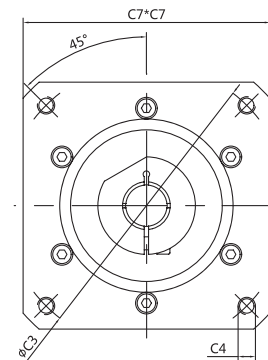


### ● BH120R-L2 (二段)

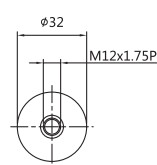
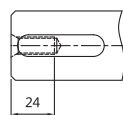
輸出端 outputs



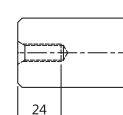
輸入端 Input



Shaft Option 1(D1)



Shaft Option 2(D2)



單位: mm

馬達記號 Motor Mark 輸入端尺寸 Input Size	S1	S2	S3	S4	S5	S6	S7	S8	S9	S10
※C1(H)	16	16	19	19	19	22	22	22	24	28
※C2(H)	70	80	70	95	110	95	110	110	110	110
※C3	90	100	90	115	145	115	130	145	145	145
※C4	M6	M6	M6	M8	M8	M8	M8	M8	M8	M8
※C5	6	6	6	8	8	8	8	8	8	8
※C6	52	52	52	62	62	62	62	62	62	62
※C7	90	90	90	130	130	130	130	130	130	130

注:

1. 帶※尺寸可依據馬達實際尺寸定制, 如有需要請聯系我司。
2. 帶※※為最大尺寸, 隨安裝馬達的不同而尺寸會有所變化。

Note:

1. “※” The size can be customized according to the actual size of the motor. Please contact our company if necessary
2. “※※” For maximum size, the mounting motors vary in size.

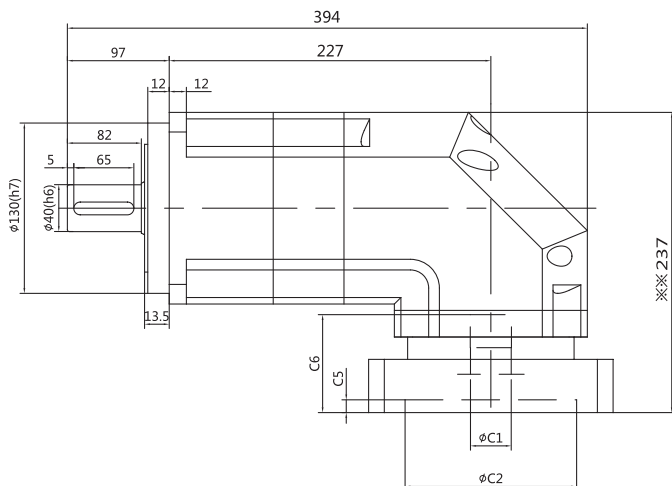
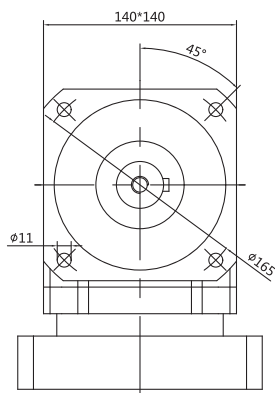




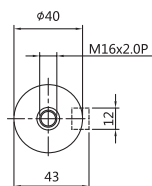
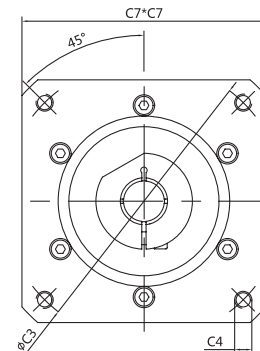


### ● BH150R-L2 (二段)

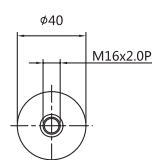
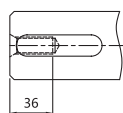
輸出端 outputs



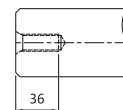
輸入端 Input



Shaft Option 1 (D1)



Shaft Option 2 (D2)



單位: mm

馬達記號 Motor Mark 輸入端尺寸 Input Size	S1	S2	S3	S4	S5	S6	S7	S8	S9	S10
※C1 (H)	19	19	22	22	22	24	28	32	35	42
※C2 (H)	95	110	95	110	110	110	110	130	114.3	114.3
※C3	115	145	115	130	145	145	145	165	200	200
※C4	M8	M8	M8	M8	M8	M8	M8	M10	M12	M12
※C5	8	8	8	8	8	8	8	8	8	8
※C6	74	74	74	74	74	74	74	82	82	82
※C7	130	130	130	130	130	130	130	180	180	180

注:

1. 帶※尺寸可依據馬達實際尺寸定制, 如有需要請聯系我司。
2. 帶※※為最大尺寸, 隨安裝馬達的不同而尺寸會有所變化。

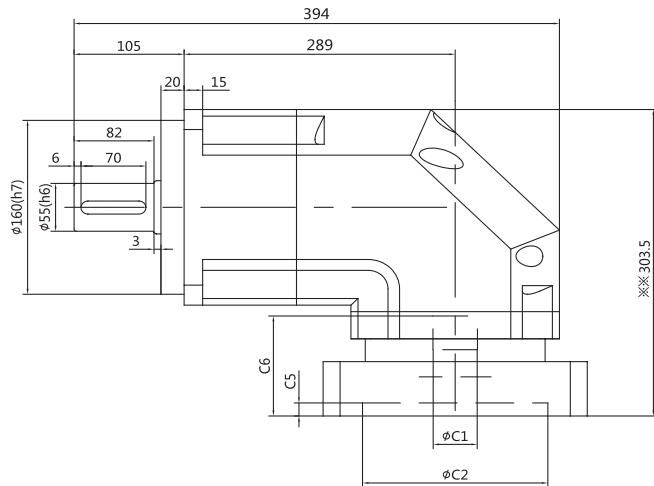
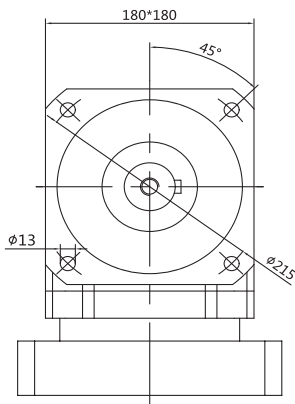
Note:

1. “※” The size can be customized according to the actual size of the motor. Please contact our company if necessary
2. “※※” For maximum size, the mounting motors vary in size.

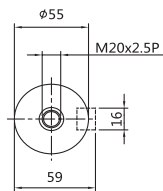
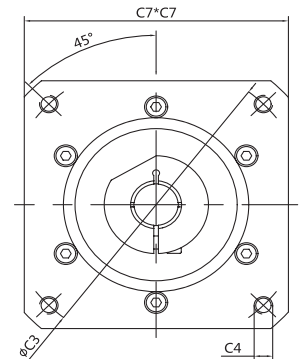


### ● BH180R-L1 (一段)

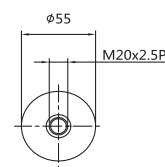
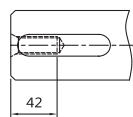
輸出端 outputs



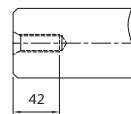
輸入端 Input



Shaft Option 1 (D1)



Shaft Option 2 (D2)



單位: mm

馬達記號 Motor Mark 輸入端尺寸 Input Size	S1	S2	S3	S4	S5	S6	S7	S8	S9	S10
※C1(H)	22	22	24	28	32	35	42	38	42	55
※C2(H)	110	110	110	110	130	114.3	114.3	180	200	200
※C3	130	145	145	145	165	200	200	215	235	235
※C4	M8	M8	M8	M8	M10	M12	M12	M12	M12	M12
※C5	8	8	8	8	8	8	8	8	8	8
※C6	74	74	74	74	82	82	82	117	117	117
※C7	130	130	130	130	180	180	180	225	225	225

注:

1. 帶※尺寸可依據馬達實際尺寸定制, 如有需要請聯系我司。
2. 帶※為最大尺寸, 隨安裝馬達的不同而尺寸會有所變化。

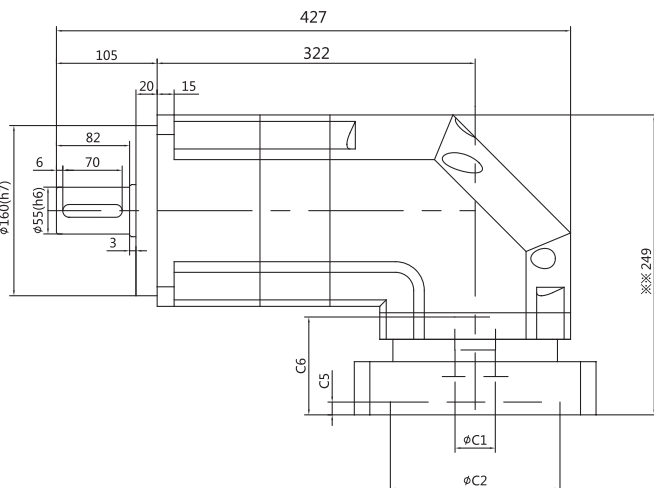
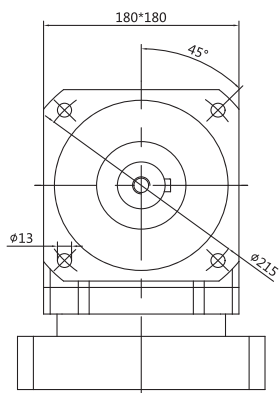
Note:

1. "※" The size can be customized according to the actual size of the motor. Please contact our company if necessary
2. "※" For maximum size, the mounting motors vary in size.

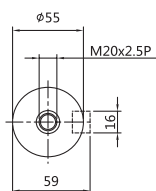
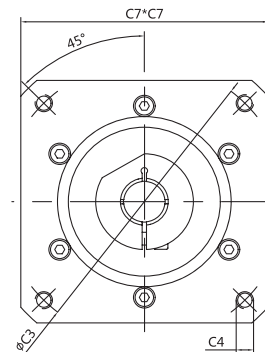


### ● BH180R-L2 (二段)

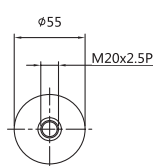
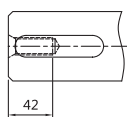
輸出端 outputs



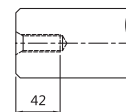
輸入端 Input



Shaft Option 1(D1)



Shaft Option 2(D2)



單位: mm

馬達記號 Motor Mark 輸入端尺寸 Input Size	S1	S2	S3	S4	S5	S6	S7	S8	S9	S10
※C1(H)	22	22	24	28	32	35	42	38	42	55
※C2(H)	110	110	110	110	130	114.3	114.3	180	200	200
※C3	130	145	145	145	165	200	200	215	235	235
※C4	M8	M8	M8	M8	M10	M12	M12	M12	M12	M12
※C5	8	8	8	8	8	8	8	8	8	8
※C6	74	74	74	74	82	82	82	117	117	117
※C7	130	130	130	130	180	180	180	225	225	225

注:

1. 帶※尺寸可依據馬達實際尺寸定制, 如有需要請聯系我司。
2. 帶※※為最大尺寸, 隨安裝馬達的不同而尺寸會有所變化。

Note:

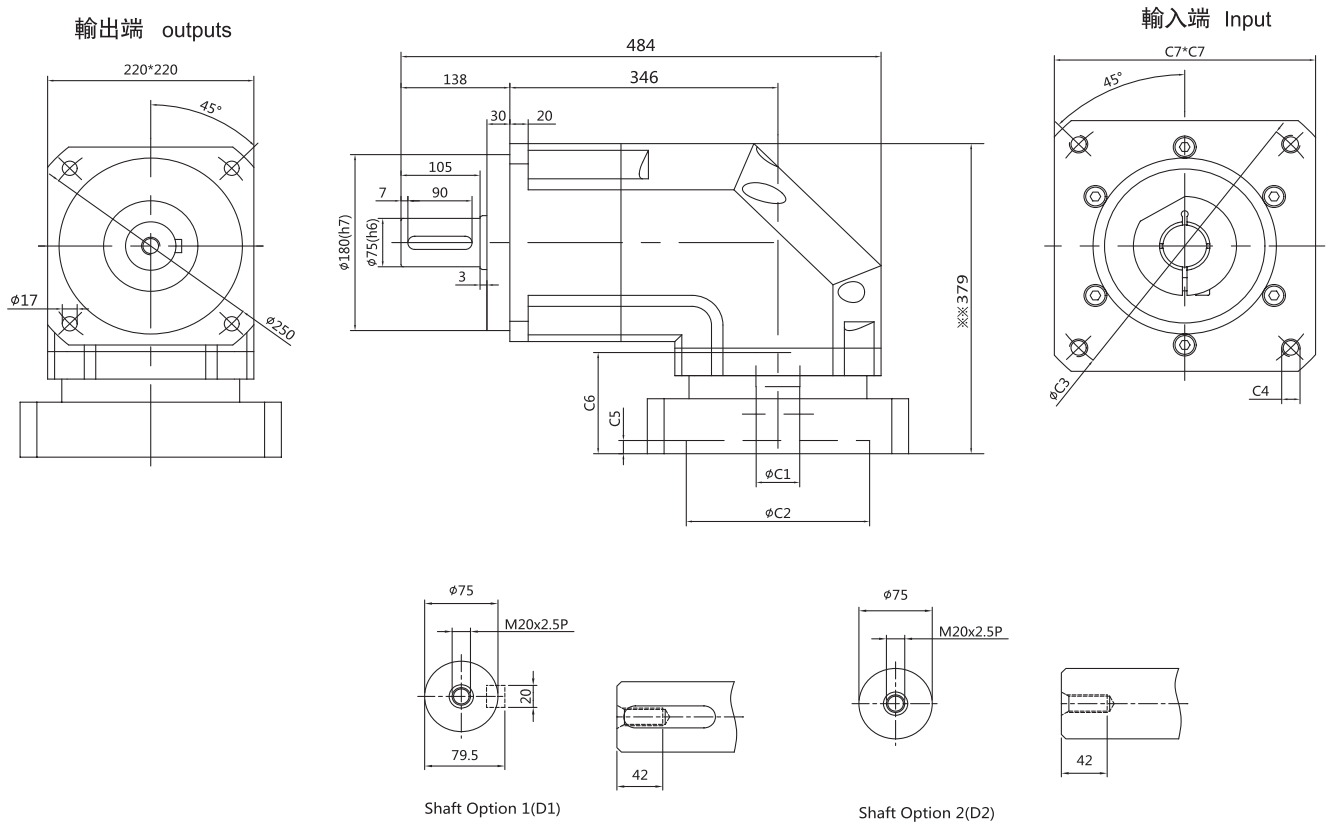
1. “※” The size can be customized according to the actual size of the motor. Please contact our company if necessary
2. “※※” For maximum size, the mounting motors vary in size.



### BH220R-L1 (一段)

CBT 減速機 BH-R 系列

CBT Reducer BH-R series



單位: mm

馬達記號 Motor Mark 輸入端尺寸 Input Size	S1	S2	S3	S4	S5	S6
※C1(H)	35	42	38	42	42	55
※C2(H)	114.3	114.3	180	180	200	200
※C3	200	200	215	215	235	235
※C4	M12	M12	M12	M12	M12	M12
※C5	10	10	10	10	10	10
※C6	82	82	117	117	117	117
※C7	180	180	225	225	225	225

注:

1. 帶※尺寸可依據馬達實際尺寸定制, 如有需要請聯系我司。
2. 帶※※為最大尺寸, 隨安裝馬達的不同而尺寸會有所變化。

Note:

1. “※” The size can be customized according to the actual size of the motor. Please contact our company if necessary
2. “※※” For maximum size, the mounting motors vary in size.

